



Light Box 60x90 Data Sheet

Main Features

- 60x90cm (2x3ft) Bowens Mount Rectangular Softbox
- 53cm (20.8in) Depth
- Incredibly Soft Light Quality
- 4-Sided Design for Perfect Simple Key Light
- Quick & Simple 4-Rod Design
- 2 Densities of Front Diffusion (1.5 Stop & 2.5 Stop)
- 45° Fabric Light Control Grid
- Carrying Bag Included
- 1.22kg (2.68lbs) Lightweight Construction

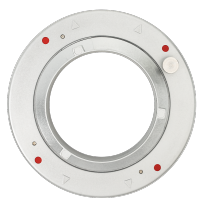
Photometrics

Fixture	Dist.	1.5 Stop Diffusion	2.5 Stop Diffusion
LS 600d Pro	1m	9,810 lux / 911 fc	7,930 lux / 736 fc
LS 300d II		4,320 lux / 401 fc	3,540 lux / 328 fc
LS 300x		2,443 lux / 226 fc	2,032 lux / 188 fc

Specifications

Softbox Dimensions	Built	60*90*53cm / 23.62*35.43*20.87in
	Collapsed	67*10*3cm / 26.38*3.948*1.18in
Front Diffusion (1.5 Stops)	Dimensions	60*90cm / 23.62*35.43in
Front Diffusion (2.5 Stops)	Dimensions	60*90cm / 23.62*35.43in
Inner Baffle Diffusion (1.5 Stop)	Dimensions	35*29cm / 13.78*11.42in
Eggcrate	Beam Angle	45°
	Dimensions	60*90cm / 23.62*35.43in
Speed Ring Adapter	Standard Bowens Mount	
Total Weight	1.22kg / 2.69	

More Pictures



Product Description

The Light Box 60x90 is a Bowens Mount Rectangular Softbox with a front aperture of 60x90cm. Its surface area and rectangular form factor make it ideal for transforming hard point-source LEDs into simple and effective soft key lights for portrait and product photography.

Its lightweight 4-rod construction and Bowens Mount speedring allow for quick setups and make it ideal for Bowens Mount point-source LEDs, such as the Aputure LS 120d and LS 300 series, as well as the amaran COB 60/100/200 series.

The Light Box 60x90 also includes two diffusion strengths, both 1.5 and 2.5 stops, as well as an inner baffle allowing users to fine-tune their intensity and light quality.

Target Audience

The Light Box 60x90 is ideal for cinematographers and photographers who need soft lights that are quick and easy to construct using Bowens Mount point-source LEDs. Its rectangular design results in the simplest build process and linear reflections which are optimal for lighting wide areas with straight reflections which are important in portrait and product photography.

What's in the Box

Name	Quantity
Light Box 60x90 Softbox	1
Inner Baffle	1
Fabric Light Control Grid	1
Front Diffusion 1 (1.5 Stop)	1
Front Diffusion 2 (2.5 Stop)	1
Speed Ring Adapter	1
Carrying Bag	1

Sales & Shipping Information

Product Name	Light Box 60x90
SKU	APA0222A30
UPC	6971842182794
Package Size	68*25*7cm / 26.77*9.84*2.75in
Net Weight	1.22kg / 2.69lb
Gross Weight	1.67kg / 3.68lb
Carton Qty	6pc
Carton Dimensions	71.5*48.5*29cm / 28.14*19.09*11.41in
Carton Weight	11.05kg / 24.36lb